

SCULPT YOUR BODY AND FIRM UP FACIAL SKIN

WITH THE

3-IN-1 MULTISYSTEM



WITH
**THE ROLL
HANDPIECE**

For body **remodeling**
and reducing
cellulite blemishes.

T-SHAPE

 B-TECH LINE

COMFORTABLE, EFFECTIVE, NON INVASIVE!



LIFTING
EFFECT

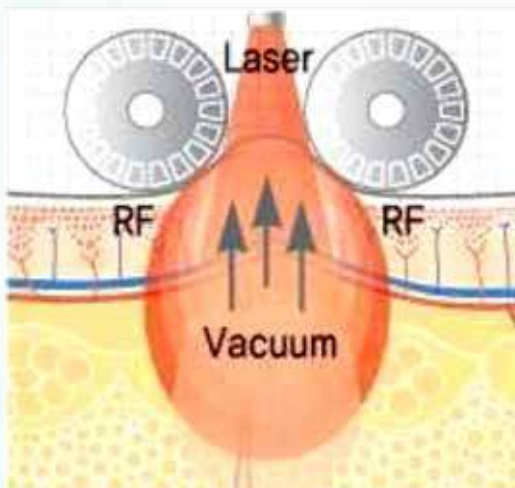
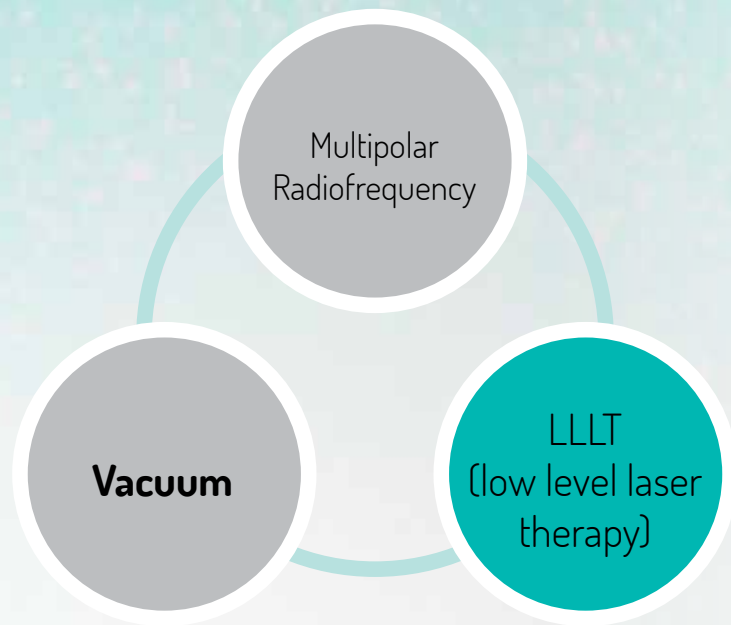
PUSH UP
EFFECT

The new generation of treatments for **remodelling body shapes** and **restructuring face skin**.

From little improvements in problematic areas to greater transformations on the entire body, we can help you look your best.

T-SHAPE COMBINES
THREE DIFFERENT TECHNOLOGIES
THAT INCLUDE:

- multipolar Radiofrequency,
- LLLT (LOW LEVEL LASER THERAPY) laser
- Vacuum suction
with a variety of dynamic pulses.



The combination of **MULTIPOLAR RADIO-FREQUENCY** and **LLLT LASER** creates intense heat on connective tissue, including fibrous tissue.

This helps increase collagen deposits and cellular metabolism for a significant localised reduction of volume and skin laxity.

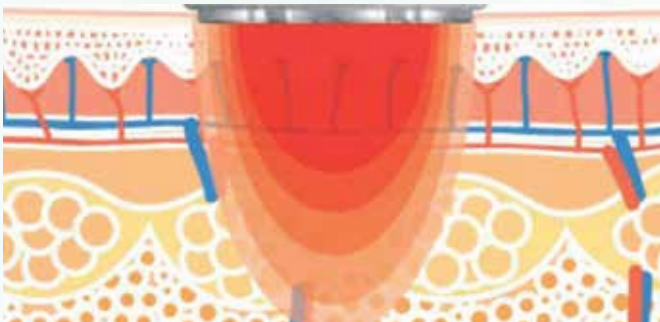
The simultaneous suction function of **VACUUM** immediately increases blood circulation and lymphatic drainage. Both are essential to improve general health.

HOW T-SHAPE WORKS

1

RF (RADIOFREQUENCY)

- T-Shape generates a bipolar, quadripolar and hexapolar radiofrequency signal.
- Heat is generated by the contact of RF energy (radiofrequency) with the tissue impedance.
- When heated in the proper way, collagen-rich dermis is immediately denatured and fibrils contract and thicken.
- New collagen is produced in response to initial heat, and skin appears firmer, more compact and younger.

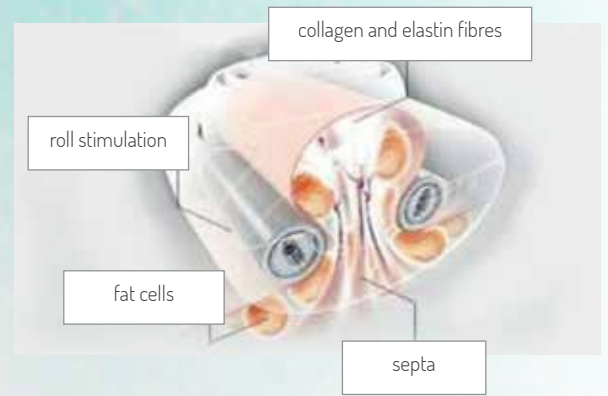


REFERENCE:

1. Fitzpatrick R, Geronemus R, Goldberg D, et al: Multicenter study of noninvasive radiofrequency for periorbital tissue tightening. *Lasers Surg Med* 33:232-242, 2003

2

VACUUM SUCTION

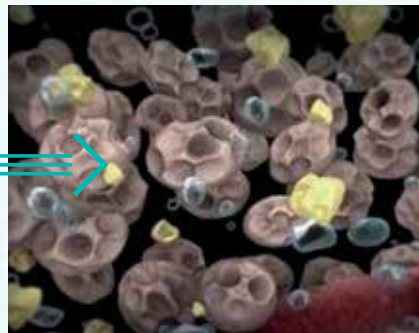


- T-Shape incorporates vacuum treatment technology with variable pulse modes.
- The Vacuum raises, folds and compresses the skin to increase local blood circulation and stimulate lymphatic drainage.
- It facilitates fibroblast activity, favours vasodilation and distributes oxygen.
- It allows an accurate distribution of energy.

3

LLLT (LOW LEVEL LASER THERAPY)

- As the LLLT laser irradiates adipose tissue, it helps form transient micropores in adipocytes, and accelerate the fragmentation of triglycerides into glycerol and fatty acids, which can escape from the cell, which, in turn, will have a reduced volume. The released lipids are eliminated through normal metabolic processes.
- LLLT effectively reduces body circumference by targeted application, to the treated areas, and has also been demonstrated to be effective in reducing oedemas.



REFERENCE:

Body Modeling Treatments: Comparison between Laser lipolysis, Laser Non-invasive Therapy with low-level laser and Ultrasound method performed by Dr. Freeman M., Sc. PhD. 12 May, 2011

MAIN STRUCTURE

CONTROL PANEL:

- The intuitive interface with LCD touch screen with predefined computer settings facilitates the treatment both for beginners and for expert users.

3 DIFFERENT TYPES, 6 HANDPIECES IN TOTAL:

- Roll Handpiece for the body
- Multipolar Handpiece for body (no. 2) and face (no. 1)
- Thermal Handpiece for the face (no. 2)



DRAWER:

- To comfortably store various handpieces in a single place

AIR FILTER:

- It allows to easily remove excess cream to keep the machine clean

● HANDPIECES FOR FACIAL TREATMENTS



THERMAL HANDPIECE



Large



Small

MULTIPOLAR HANDPIECE

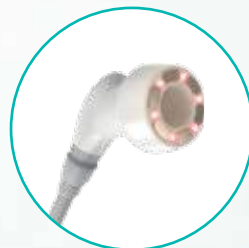


Small

● HANDPIECES FOR BODY TREATMENTS



MULTIPOLAR HANDPIECE



Large



Small

ROLL HANDPIECE



T-SHAPE HANDPIECES FOR BODY TREATMENTS

ROLL HANDPIECE

CHARACTERISTICS AND ADVANTAGES

- For the remodeling of the body contour and to reduce cellulite.
- The bipolar vacuum-assisted motorized roll handpiece allows to precisely calibrate both laser and multipolar radiofrequency energy, on the spots where it is possible to obtain maximum effect.
- Easy to use.
- 4 types of dynamic pulses.



- TECHNOLOGY**
- Bipolar Radiofrequency.
 - Vacuum suction.
 - LLLT Laser treatment.

- TREATMENT AREA**
- Back, abdomen, thighs.

MULTIPOLAR HANDPIECE

CHARACTERISTICS AND ADVANTAGES

- For body slimming and muscle relaxation.
- Use of 4 and more electrodes to deliver current to the skin tissue.
- This vacuum-assisted handpiece for the body can simultaneously heat superficial and deep skin layers, delivering targeted and uniform current to the skin.
- Easy to use.
- 4 types of dynamic pulses.



- TECHNOLOGY**
- Multipolar Radiofrequency.
 - Vacuum suction.
 - LED (Red).

- TREATMENT AREA**
- Back, abdomen, thighs.

T-SHAPE HANDPIECES FOR FACE TREATMENTS

MULTIPOLAR HANDPIECE

CHARACTERISTICS AND ADVANTAGES

- For lymph drainage and facial firming.
- Use of 4 and more electrodes to deliver current to the skin tissue. This vacuum-assisted handpiece for the face can simultaneously heat superficial and deep skin layers, delivering targeted and uniform current to the skin.
- Easy to use.
- 4 types of dynamic pulses.



- TECHNOLOGY**
- Quadripolar Radiofrequency.
 - Vacuum suction.
 - LED (Red).

- TREATMENT AREA**
- Forehead, cheeks, maxillary line and neck.

THERMAL HANDPIECE

CHARACTERISTICS AND ADVANTAGES

- For Face Lift.
- Increased thermal conductivity, which reduces treatment time, thanks to the ceramic-coated bipolar tips.
- Ergonomic design conceived to cover sensitive and difficult-to-reach areas, such as perioral and periorbital areas.
- Available in 2 sizes.



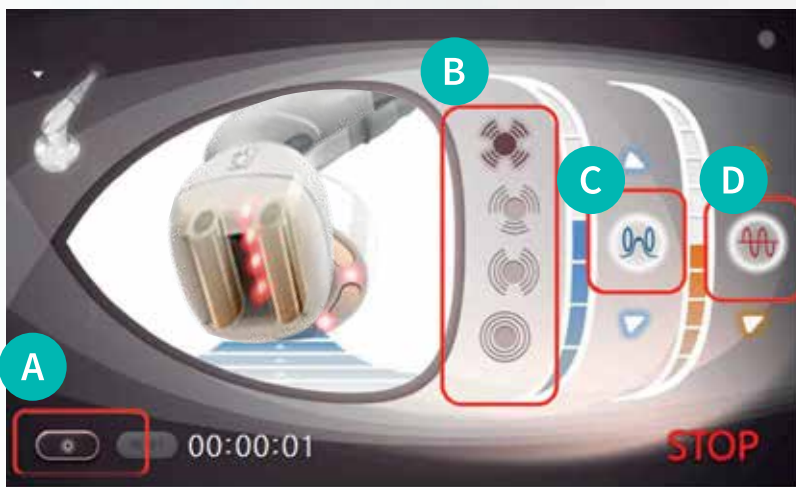
- TECHNOLOGY**
- Bipolar Radiofrequency.

- TREATMENT AREA**
- Large: neck, forehead, cheek and maxillary line.
 - Small: periorbital and perioral area.

T-SHAPE CONTROL PANEL

CONTROL PANEL

- Intuitive, intelligent and easy-to-use interface.
- High-resolution colour touch screen with preset parameters for safe, constant, reliable and effective results.



- A** LLLT LASER
- B** DYNAMIC PULSES
- C** VACUUM LEVEL
- D** RADIOFREQUENCY LEVEL

RF Level 10, Vacuum Suction 7, Pulse Mode 4

T-SHAPE SUITABILITY

- Skin firming
- Cellulite reduction
- Fat deposit reduction
- Circumference reduction
- Post-liposuction treatment
- Face lift and skin firming

RESULTS OF **SPECIFIC CASES**

RESULTS OF SPECIFIC CASES

Proven power, exceptional results.

Witness the transforming power of T-Shape treatments on a wide range of body builds. These different treatment settings allow you to exercise the power and flexibility necessary to treat almost every customer with measurable, immediate and lasting results.

A - Abdomen

Woman, 40 years old | After 10 sessions



BEFORE



AFTER

B- Hips

Woman, 40 years old | After 10 sessions



BEFORE



AFTER

C- Legs

Woman, 40 years old | After 10 sessions



BEFORE



AFTER

ADVANTAGES OF T-SHAPE

T-SHAPE OFFERS ALL THESE AND MANY OTHER BENEFITS.

- Suitable for a wide range of customers to treat a variety of body builds and multiple body areas, including face.
- Versatility in the treatment of various stubborn fatty areas and/or or flaccid skin.
- Simple, fast and comfortable treatments, high level of customer satisfaction.
- Non-invasive, non-surgical, does not require anesthesia. Virtually painless treatment.
- It helps reduce post-operative swelling by improving blood circulation in the treated area.
- Easy to use.

T-SHAPE **PROTOCOL**

USE PROTOCOL

- **Timing:** the average time required for a T-Shape treatment is approximately 30 minutes per area (face and body).
- **Experience:** most customers relax comfortably during treatment.

Schedule:

Treatments usually include 2 sessions per week. Most clients will complete 8 - 10 treatments to achieve the desired result.

Easy to use.

TECHNICAL SPECIFICATIONS

SUPPLY VOLTAGE	220/230 Vac 50/60 Hz
POWER CONSUMPTION	1300 W
WEIGHT	45 Kg
DIMENSIONS	348x513x1008
LOW-POWER LASER WAVE LENGTH	650 nm
LASER CLASS	3 R
LASER DENSITY	8MW/cm ²
BIPOLAR RADIOFREQUENCY SIGNAL FREQUENCY	1500 kHz (1.5 Mhz)
MAXIMUM RF POWER	Less than 25 W
STIMULATED SUCTION VALUE	Less than 80 kPa (0.8 bar)
RESISTIVE RADIOFREQUENCY	Complies with tab no. 13B of Ministerial Decree no. 206 of October, 2016
VACUUM	Complies with tab no. 14 Ministerial Decree no. 206 of October, 2016
SOFT LASER	Complies with tab no. 21A of Ministerial Decree no. 206 of October, 2016



NOTES



B A L D A N
G R O U P
www.baldangroup.com

B&M Srl - Marketing nel Benessere
Via L. Bruni, 25 - Milano - ITALY

